

SAFETICA INSTALLATION MANUAL

SAFETICA INSTALLATION MANUAL

for Safetica version 8.0.x

Author: Safetica Technologies s.r.o.

Safetica was developed by Safetica Technologies s.r.o.

All rights reserved. No part of this documentation may be reproduced, stored in a retrieval system or transmitted in any form or by any means, electronic, mechanical, photocopying, recording, scanning, or otherwise without permission in writing from the author.

While every precaution has been taken in the preparation of this document, the publisher and the author assume no responsibility for errors or omissions, or for damages resulting from the use of information contained in this document or from the use of programs and source code that may accompany it. In no event shall the publisher and the author be liable for any loss of profit or any other commercial damage caused or alleged to have been caused directly or indirectly by this document.

For more information visit www.safetica.com.

Published: 2018

CONTENT

Introduction

About safetica

1 Architecture	5
----------------------	---

Installation

1 Automatic installation	6
2 Manual installation	7
Before installation	7
Installing server	8
Microsoft SQL Server settings.....	9
Configuring an Existing SQL server	10
Microsoft SQL Server installation.....	11
Installing a new SQL Server Express	12
Configuring existing SQL Server Express	14
Installing console	15
Initial configuration	16
Batch Installation of dow nloader agent using GPO.....	18
Manual installation of dow nloader agent.....	23
Installing client	23

INDEX

0

1 Introduction

Dear user,

We are glad that you have chosen the Safetica software for protecting your company. In this Manual you will find a step-by-step guide taking you through the whole installation process for all supported network environments. Should you encounter a problem during installation, first consult *the complete documentation of Safetica*. If, after that, you still have not reached a solution, contact technical support at <http://www.safetica.com/support>.

Safetica brings a completely new approach to internal security. It is the first security solution which combines real prevention with actual protection against internal threats. By monitoring users it reveals their risk behavior, and by blocking unsolicited actions and protection against data leakage (DLP) it protects the company from the consequences of undesirable activities by employees. No other software can protect a company against all major internal threats in such an all-encompassing manner.

For successful installation of the product, we recommend that you read *the complete documentation for Safetica*. Here you can find detailed information ranging from initial deployment on the company network to examples of usage, evaluation of output and how to solve the most frequent problems.

To quickly master basic practices and usage, use the *Safetica quick guide*.

Thank you,

Safetica Technologies team, producer of Safetica

2 About safetica

Every day your company can be damaged by its own employees. They may only pretend to be working, misuse company resources, or steal and lose sensitive data. Safetica security software is the only application in the world that protects your company against all the major failures of your staff: sensitive data leaks, financial losses, and damage to your company reputation. At the same time, it alerts you to potentially dangerous behavior among your staff long before their conduct threatens your company.

Safetica modules



Auditor

Detect potentially dangerous employee behavior right from the moment it starts. Monitor employee working activity and detect who is trying to damage your company.



DLP

Prevent your employees from misusing the data they are granted access to, and protect sensitive company information against unauthorized persons.



Supervisor

Obtain control over employees' working activity. Eliminate undesirable behavior and thus increase employee productivity.

2.1 Architecture

The Safetica product is based on a client – server architecture. On end workstations, the Safetica client runs communicating with the server. Together with the client, the downloader agent runs on workstations, which is designed to install, update and manage other client components. To manage, set up, and display the obtained data, the console or WebSafetica is used. Data obtained from individual end workstations are stored on a database server. The database also stores the settings for all Safetica components.

Each of the following parts can be installed on a separate computer.

Server

The Safetica server runs as a service on a dedicated server, provides connection between the database and other Safetica components and enables their remote management.

Recommended hardware and software requirements

Quad-core processor 2.4 GHz, 2 GB RAM, 3 GB disk space. Supported operating systems are Microsoft Windows Server 2008 R2 or later.

Note: Only a single server instance can be installed on one computer.

Console

The console is used to set up and manage clients and downloader agents on end computers and for server services (of the server) and databases; it's also used to set up all Safetica functions on endpoint stations. It also displays the output of acquired data, statistics and graphs. It can run anywhere provided there is a connection to the managed server.

Recommended hardware and software requirements

Dual-core processor, 2 GB RAM, 2 GB of disk space. Supported operating systems are Microsoft Windows 7 32-bit and 64-bit and newer versions of the Windows operating system.

WebSafetica

WebSafetica is a web console for managing Safetica and displaying records obtained from endpoint stations.

Help for its use and deployment is available online at <http://go.safetica.com/kb/en>.

Downloader Agent

The Downloader client is a Safetica component used to manage the Safetica client on end computers. It allows remote installation, updating and other management tasks.

Recommended hardware and software requirements

The same as the requirements of the console.

Client

The client provides all the security and monitoring functions of Safetica at endpoint stations. It consists of the following main parts:

- *Client service* – is always launched at system startup and provides monitoring, enforces the security policy and facilitates communication with the database and server. The client service manages the operation of the Auditor, DLP and Supervisor modules on the endpoint stations.

During the installation of the client, the *Downloader Agent* component will be installed automatically

unless it has been installed previously.

Note: The minimum supported version of the Safetica client is 6.8.

Recommended hardware and software requirements

The same as the requirements of the console.

Database

The database is used to save the settings and records received from all Safetica components. Each server needs three dedicated databases to store logs, settings and categories of applications, sites and extensions. To save the databases, Microsoft SQL Server 2008 32-bit and 64-bit and higher versions, including Express editions (www.microsoft.com) can be used. WebSafetica is available only for MS SQL 2012 and higher, including Express editions

Note: For hardware and software requirements of the database servers mentioned above, please visit the website of the manufacturer.

3 Installation

Safetica is installed using a universal installer that includes all necessary components. Once you run it, you can choose one of the two installation methods:

- [Automatic installation \(Safetica installation\)](#) – automatically installs all components on a computer.
- [Manual installation \(Expert installation and extraction of components\)](#) – manual installation of individual Safetica components.

Choose one of them and continue in the installation. Enter topic text here.

3.1 Automatic installation

After launching the installer, you can choose from two options: *Automatic* or *Manual* installation. This guide will only describe the *Automatic installation* which installs the server component, administrative consoles including WebSafetica, IIS web server and Microsoft SQL Server Express database server on the current computer. Clients are installed during the first launch of Safetica after installation. Make sure the computer has enough computing power to handle operation of the database, server and also WebSafetica. The recommended configuration is a quad-core processor, 8 GB RAM, 100 GB free disk space. This installation is intended exclusively for testing or for a smaller number of Safetica clients installed on end computers.

If you want to adjust the installation parameters or perform the installation for more clients, we recommend choosing the Manual installation. Its description is available in the full manual which you can open in the installer under *Manual installation -> Documentation -> Complete manual*.

After launching the Safetica installer, proceed as follows:

1. Click on *Automatic installation* and confirm the licence agreement
2. The next step displays the hardware requirements. Read them and continue.
3. Enter a strong password for the default administrator account *safetica*. Confirm the licence conditions of the SQL server and start the installation by clicking *Install*.

Note: WebSafetica uses the Microsoft IIS web server and is available on ports 80 and 443.

Make sure that there is no application running on the computer that would block ports 80 and 443, or configure different IIS ports after installation.

3.2 Manual installation

Please follow this procedure for Safetica deployment:

1. Before installation please check whether your network fulfils the [deployment conditions](#).
2. Install the [server](#) on selected computers. During installation, choose which database will be used by server for storing data.
3. Install the [console](#) or WebSafetica on the PC from which you want to manage Safetica.
4. Using console, connect to the server and perform initial [Safetica configuration](#).
5. [Install downloader agent](#) on the end workstations.
6. Use console to install the client on the end workstations (client installation via console is only possible on computers with the downloader agent installed).

After deploying all components and checking if everything has been correctly installed, you can start working with Safetica.

In the chapters below you can find a more detailed description of each deployment step.

3.2.1 Before installation

Take the following steps before installation:

1. Check whether the [hardware and software requirements](#) of all three Safetica components are met.
2. Analyze your corporate network:
 - Decide on what PCs you are going to install the server in your environment. When making the decision, take the following into account:
 - The PC with Safetica server must be able to connect to the SQL server on which the main databases will be stored.
 - Depending on the number of SECs connected and the database server type, set how many servers you wish to install in your environment. The number of SECs that can connect to one server is limited by the SQL database which the server uses for storing data – see below.
 - Decide on what PCs you are going to install the console in your network. The PC with console must be able to connect to all servers you wish to administer by using the administration console.
 - Decide on what PCs you are going to install the downloader agent in your network.
 - The PC with downloader agent must be able to connect to some server in your environment.
 - Decide on what PCs you are going to install the Safetica client in your network. When making the decision, take the following into account:
 - For every Safetica client, decide what server it will be connected to. Not every PC will be connected to all PCs with server.
 - The PC with client must be able to connect to some server in your environment.
 - Select and designate SQL servers on which the central databases of the individual server will be stored. When making the decision, take the following into account:
 - Every server needs three designated databases on the SQL server: one for settings, one for records and one for the category database.

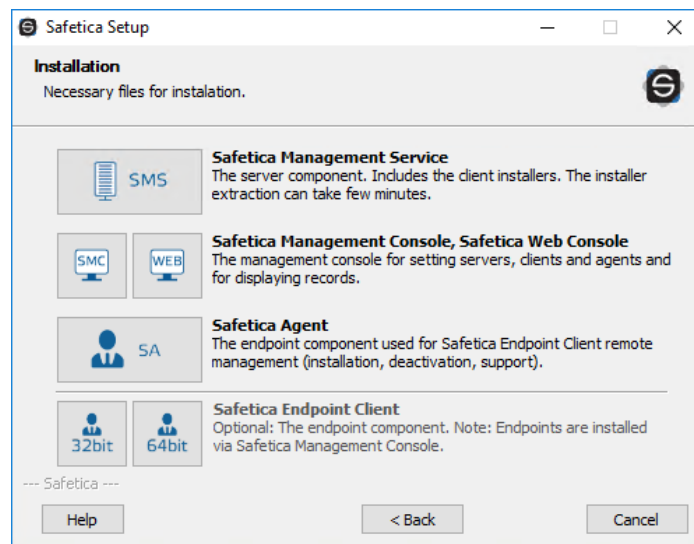
3. Before installing the various Safetica components (server, console, client), ensure they will not be blocked by a firewall or antivirus software.
 - o Add exceptions for incoming connections to the process STAService.exe and the following ports on the PCs on which the server will be installed:
 - 4438 (communication client -> server, database).
 - 4441, 4442 (communication console -> server).
 - o Add exceptions for the process STAConsole.exe on the PCs on which you will install the console.
 - o Set exceptions for the following processes on the PCs on which you will install the client: STCSERVICE.exe, STUserApp.exe, Safetica.exe, outgoing and incoming connections.
 - o Set exceptions for port 1433 (default port for database connection) on the PCs on which you will install the databases.
 - 1443 (communication client, server -> database).
4. Download the universal installer with the latest Safetica release.
 - o The universal installer contains all components necessary for installation.

3.2.2 Installing server

Safetica server ensures that all Safetica clients, the console and the databases are interconnected.

To perform the installation, proceed as follows:

1. Launch the universal installer that you have downloaded. After selecting your language, and agreeing to the license terms, go to Installation > Safetica Management Service.



2. Here you several options:
 - o Run the installation directly from the universal installer by clicking on Run Installer.
 - o Extract only the server installer, which you can then use separately for later installation.

Note: In the third part Tools and Components you will find components essential for correct installation of the client or Microsoft SQL Server 2012 SP2 Express. If you are going to install Microsoft SQL Server 2012 SP2 Express from this installer, make sure you have installed the Microsoft Installer 4.5 component. If this component is not installed, install it now.

3. After running the installer (either from the universal installer or from the extracted one), se-

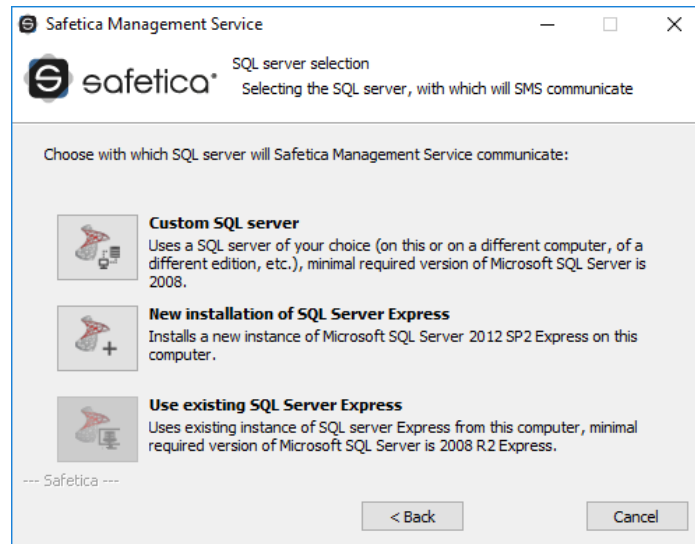
- lect your language once again and accept the license terms. Select the installation folder.
4. Select the Installation Folder.
 5. This is followed by an important step of [configuring Microsoft SQL Server](#) where the installed server will store its databases.
 6. Furthermore, please specify:
 - o *Enable automatic definition update* – by selecting this option you allow console to automatically install the updates of definitions (if Internet and database connections are available). The updating process may increase the workload of the SQL Server. This setting can be changed any time you like in *Console -> Maintenance -> Update -> Definition updates*.
 - o *Send statistics automatically* – select this option to allow console to send anonymous statistical information to Safetica Technologies which in turn allows us to actively solve any problems and to improve the product. No sensitive information or security-related information is sent. You can change this setting any time you like in *Console -> Maintenance -> Database management -> Maintenance -> Statistics sending*.
- It is advisable to keep both the options enabled.
7. Complete the installation. Server will install and then launch automatically.
 8. Once the installation has successfully completed, verify that the STAService.exe is running (Task Manager -> Services -> STAService – running)
 9. Finally, verify that you have added exceptions to your firewall and antivirus for the STAService.exe process and that ports 4438, 4441 and 4442 are not blocked.

Note: By default, console uses ports 4441, 4442 for connecting to server and client uses port 4438. You can change the settings to use different ports as well.

3.2.2.1 Microsoft SQL Server settings

Next, you must choose the SQL Server on which the server will store the databases. You can choose from the following options:

- a. *Custom SQL Server* – If choosing this option, you can use your existing Microsoft SQL Server installation to create the database. Supported Microsoft SQL Servers are listed in the requirements. For a description of the configuration, continue to [Configuring an Existing SQL Server](#).
- b. *New installation of SQL Server Express* – If choosing this option, you will install Microsoft SQL Server 2012 SP2 Express on your existing PC. The new server will be used for creating the server databases. For a description of the installation, continue to [Installation of New SQL Server Express](#).
- c. *Use existing SQL Server Express* – If you have an existing instance of Microsoft SQL Server 2012 SP2 Express on the PC where you are going to install server, you can choose this last option. The existing SQL Server will be used for storing server databases. For a description of the configuration, continue to [Configuring an Existing SQL Server](#).



Configuring an Existing SQL server

If you choose your own SQL server during Safetica server installation, you need to check first if this server is correctly set for storing databases.

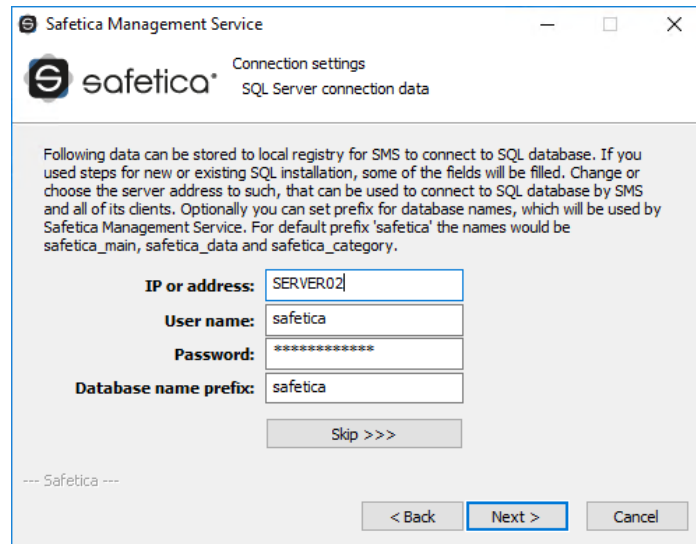
- Check whether SQL Server authentication is set to mixed mode – SQL Server authentication and Windows authentication (Microsoft SQL Server Management Studio -> Server settings -> Security -> SQL Server and Windows Authentication mode).
- The SQL server must be available in the network via the TCP/IP protocol (SQL Server Configuration Manager -> SQL Server Network Configuration -> TCP/IP Enabled).
- A user with administration rights (*sysadmin*) must be created in the SQL server. Apply this user when entering the data.

If you have no SQL server installed, follow the instructions and go to [Installation of User's Own SQL Server](#).

If you have the SQL Server installed and it meets all criteria set the opening section, you can begin the configuration:

1. First complete the following:

- *IP or address* – enter the IP address or SQL Server name here. The SQL server must be available via this address or name both for newly installed server and for Safetica clients that will connect via this server. When filling this in, you can specify the SQL Server instance (e.g. 192.168.100.1\InstanceName). If entering a plain IP address or name, the default SQL server instance will be applied.
- *User name* – enter the name of the user for the SQL server. The user must have administration rights (*sysadmin*). The user will be applied for creating and connecting to all three databases that will be automatically created on the SQL server after server installation.
- *Password* – SQL server user name.
- *Database name prefix* – adds a prefix in front of the database name. For instance, when using the *db* prefix, the resulting database names will be *db_main*, *db_log* and *db_category*.



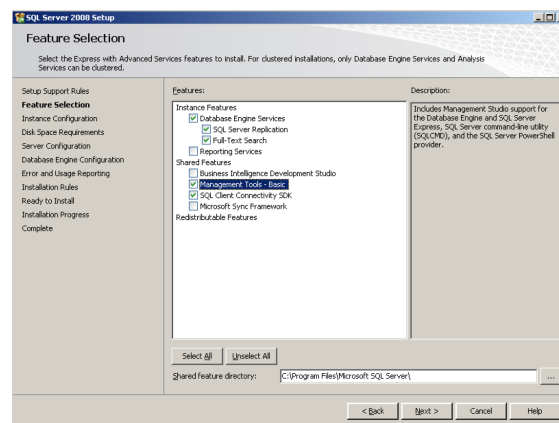
2. Click *Verify and save*.
3. Click *Next*, continue and [finish server installation](#). After completing the server installation, three databases will be created on the SQL server:
 - o *safetica_main* – used for storing and sharing settings between server and client.
 - o *safetica_data* – used for storing data recorded from clients.
 - o *safetica_category* – used for storing applications, websites and appendices categories.

Note: You can later change the connection to the server via the console in the Server settings section. The configuration of this connection is described in the section [server settings](#).

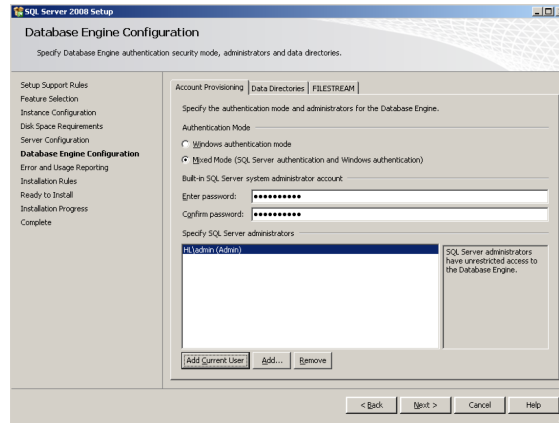
3.2.2.1.1.1 Microsoft SQL Server installation

If you don't have SQL Server installed proceed as follows when installing new SQL Server:

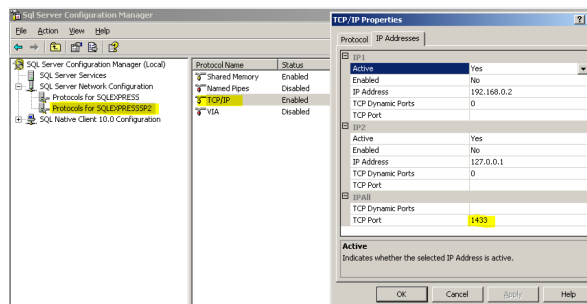
1. Install MS SQL on your server from the following components.



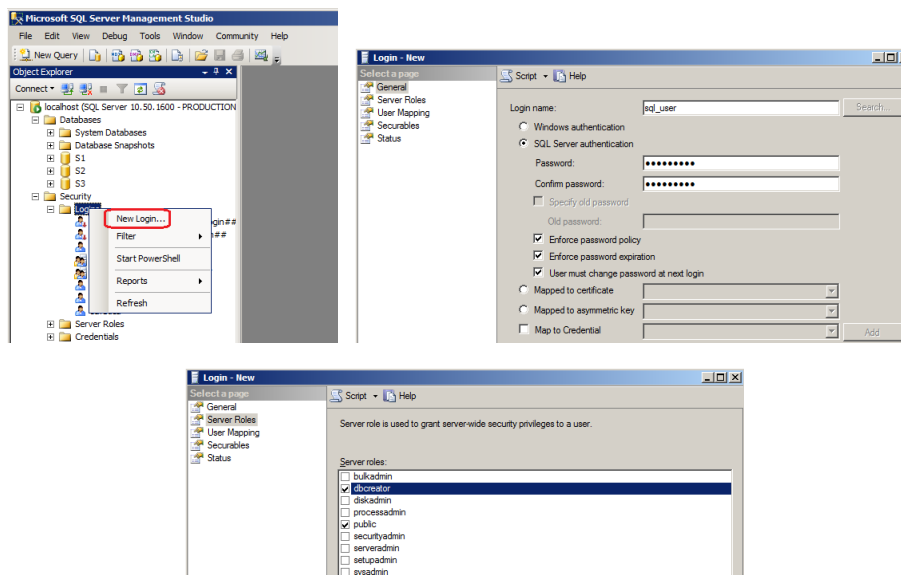
2. Set up Mixed mode authentication in the relevant installation step.



3. Make sure that you have the MS SQL server set to listen, for example, on port 1433. You can do this using the Sql Server Configuration Manager tool



4. Create a new MS SQL user with sufficient rights to create databases using the Sql Server Management Studio tool. Select the authentication type in the setup as SQL Server authentication and enter a new password.



The connection of server to these databases is set via console in section Server settings.

Installing a new SQL Server Express

If you do not own any SQL Server, you can install Microsoft SQL Server 2012 SP2 Express from this installer.

Note: The Express edition comes with the following restrictions:

- It uses only one processor.
- It uses maximum 1 GB of RAM.
- The maximum database size is 10 GB.

Due to these restrictions to the Express edition of the SQL Server, the ideal number of SECs connected to server with this SQL server is 50, with a maximum of 70.

In the configuration of the new SQL Server the following settings are entered by default:

- The SQL server instance name is MSSQLSERVER.
- The default password for the user "sa" is set to "safetica". The "sa" user will be applied for access to all three databases.

Note: If the group policy (local or domain policy) defines a certain password complexity, then a password must be entered for SQL installation that corresponds to the policy set.

After clicking the *Use default values* button, you can change the data shown above. For security reasons, we recommend using a different name for the user "sa".

After accepting the License Terms of Microsoft SQL Server 2012 SP2 Express, you can click *Next* to launch the SQL server installation.

After completion of SQL Server Express installation, click *Next* and enter the SQL server user name and password for the server that will be used for database access. The default user is *safetica* with password *safetica*. For security reasons, we recommend changing the default user password *safetica*.

Click Next.

When SQL server configuration has been completed, click Next and confirm the settings for SQL server connection in the following dialog by clicking *Verify and save*. Click *Next*.

Safetica Management Service

Connection settings
SQL Server connection data

Following data can be stored to local registry for SMS to connect to SQL database. If you used steps for new or existing SQL installation, some of the fields will be filled. Change or choose the server address to such, that can be used to connect to SQL database by SMS and all of its clients. Optionally you can set prefix for database names, which will be used by Safetica Management Service. For default prefix 'safetica' the names would be safetica_main, safetica_data and safetica_category.

IP or address: SERVER02

User name: safetica

Password: *****

Database name prefix: safetica

Skip >>>

< Back Next > Cancel

Continue and [finish server installation](#). After successful completion of the server installation, three databases will be created on the SQL server:

- safetica_main – used for storing and sharing settings between server and client.
- safetica_data – used for storing data recorded from clients.
- safetica_category – used for storing applications, websites and appendices categories.

Note: You can later change the connection to the server via the console in the Server settings section.

Configuring existing SQL Server Express

If you have Microsoft SQL Server 2012 SP2 Express already installed on the PC where you are installing the server, you can use it for creating the databases. The installer will automatically re-configure the existing SQL server installation on that PC. Server will automatically connect to this instance and create the respective databases after installation.

Note: The Express edition comes with the following restrictions:

- It uses only one processor.
- It uses maximum 1 GB of RAM.
- The maximum database size is 10 GB.

Due to these restrictions to the Express edition of the SQL Server, the ideal number of clients connected to server with this SQL server is 50, with a maximum of 70.

In the first dialog enter the SQL server user name and password for the server that will be used for database access. The default user is *safetica* with password *safetica*. For security reasons, we recommend changing the default user password *safetica*.

Click *Next*.

When SQL server configuration has been completed, click Next and confirm the settings for SQL server connection in the following dialog by clicking *Verify and save*. Click *Next*.

Continue and [finish server installation](#). After successful completion of the server configuration, three databases will be created on the SQL server:

- safetica_main – used for storing and sharing settings between server and client.
- safetica_data – used for storing data recorded from clients.
- safetica_category – used for storing applications, websites and appendices categories.

Note: You can later change the connection to the server via the console in the Server settings section.

3.2.3 Installing console

The console is the central point for managing the software. It is used for setting up and managing both clients and servers as well as for database management, and of course for the management of Safetica modules. The console also shows statistics, charts, and monitoring outputs. By using the console, you can manage multiple instances of Safetica servers. All you need is a console running on any computer that can access the managed server. Neither the number of console installations nor the number of its users is limited by the license.

Proceed with the installations as follows:

1. Launch the universal installer that you have previously downloaded. After selecting your language and agreeing to the license terms, go to *Installation -> Safetica Management Console*.
2. Here you have several options:
 - Run the setup directly from the universal installer by clicking on the *Run installer* button.
 - Extract only the console installer, which you can then use separately for later installation.

Note: In the third part Tools and Components are components that are necessary for proper function of Safetica Endpoint Client or Microsoft SQL Server 2012 SP2 Express. If you will be installing Microsoft SQL Server 2012 SP2 Express.
3. After running the installer (either from the universal installer or from the extracted one), select your language once again and accept the license terms. Select the installation folder and complete the installation.
4. Finally, verify that you have added exceptions to your firewall and antivirus for the *STAConsole.exe* process.

3.2.4 Initial configuration

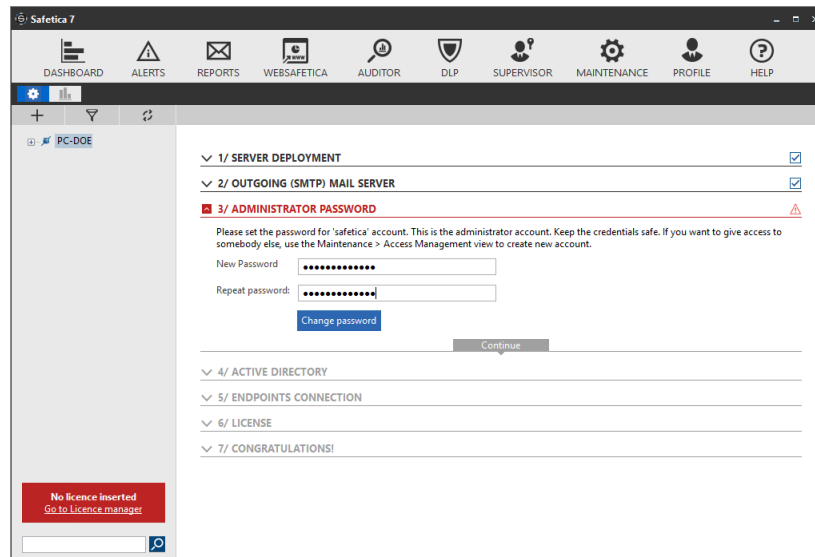
After successfully installing the console and server, the whole system must be set up properly, before starting installing the downloader agent and client on end computers. All administration and settings are carried out via the console.

Overview of main configuration steps:

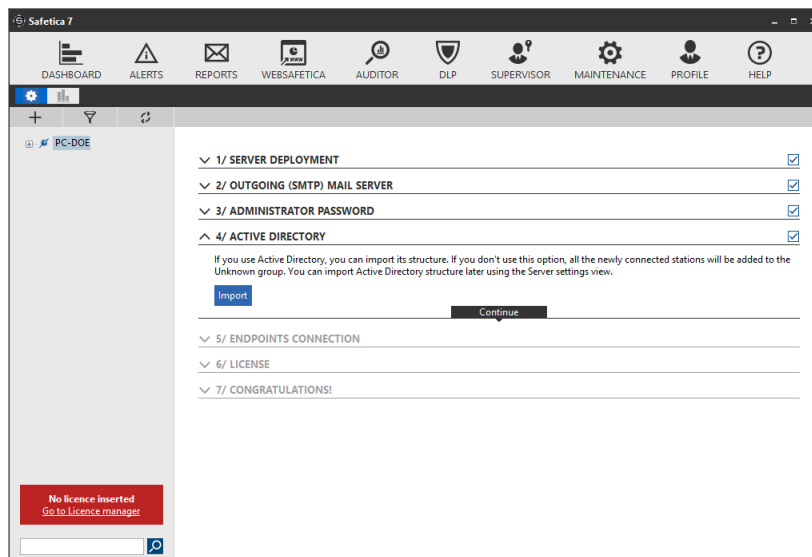
1. Start the console. In the dialogue box, enter the service account credentials to log on to the server. The service account username is *safetica* and the default password is *S@fetic@2004*. In the advanced settings, enter the address or name of the server with the installed server. Use the default port 4441 for the console logon to the server. Finally, press OK to confirm.

2. Then the wizard for initial configuration is opened in Safetica. The setting of the Safetica server and SMTP server for sending e-mails is done during installation. If all goes well, the wizard opens in item three. Set the new Safetica service account password for logging into the Safetica console. Click on Continue.

Note: The service account has full authorisation for all Safetica functions and settings. Keep the login credentials for this account in a safe place. If you want to provide others with the access to Safetica, create a new account for them in the tab Maintenance -> Access management -> Add account.

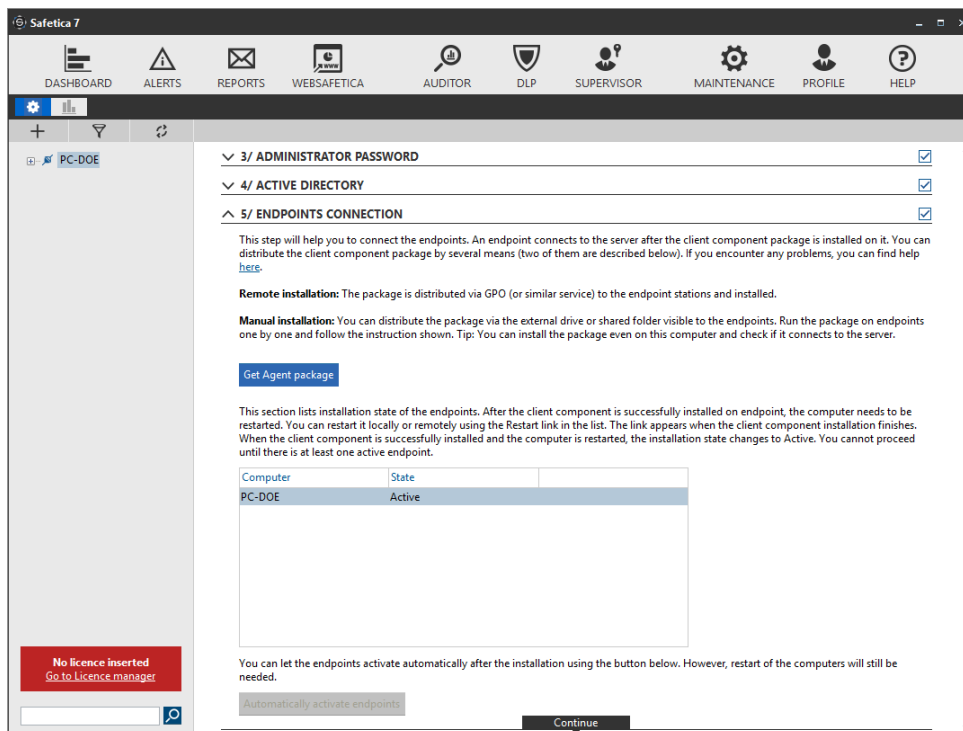


3. You can import your corporate structure to Safetika from your corporate Active Directory. This is only possible if the computer with Safetika server is in the domain. If you do not make use of this option, the new connected clients will be put in Unknown group. You can perform import from Active Directory later in *Profile-> Server settings* in *Database connection setting* section.

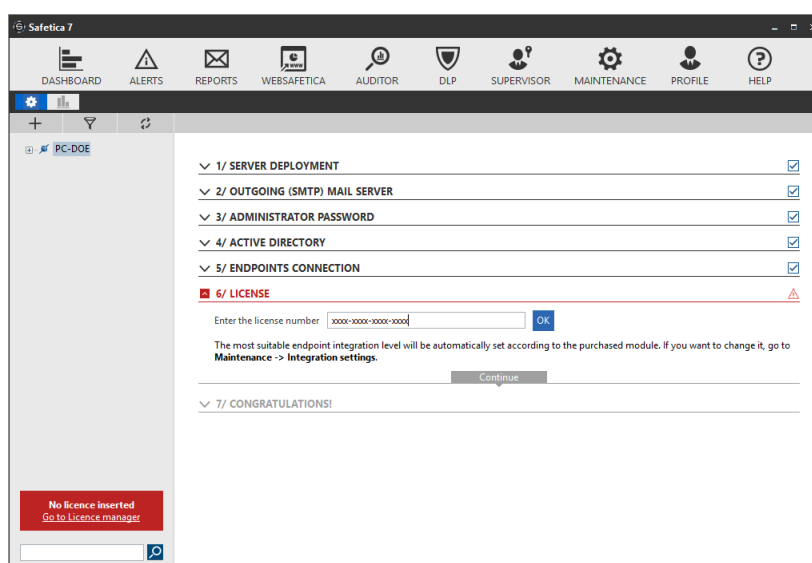


4. This step will help you install a downloader agent on endpoints, so that they can be connected to Safetika. After clicking on *Get Agent package*, an installation file of the downloader agent is generated that you can install at workstations. The agent installation can be done in two ways:
 - [Remote \(batch\) installation](#)
 - [Manual installation](#)

After installation of downloader agents you can automatically install and activate Safetika clients by clicking *Automatically activate endpoints*. The task of the client installation can be managed from *Console -> Maintenance -> Endpoint management*.



- In this step, enter the license key in Safetica. The license key may be entered later in *Maintenance -> License management*. The functions of Safetica will not be available without the license key.



- In the last step of the wizard you can either choose the preset functions of Safetica or adjust them manually in each function.
- Exit the wizard by clicking on *Start protection!*

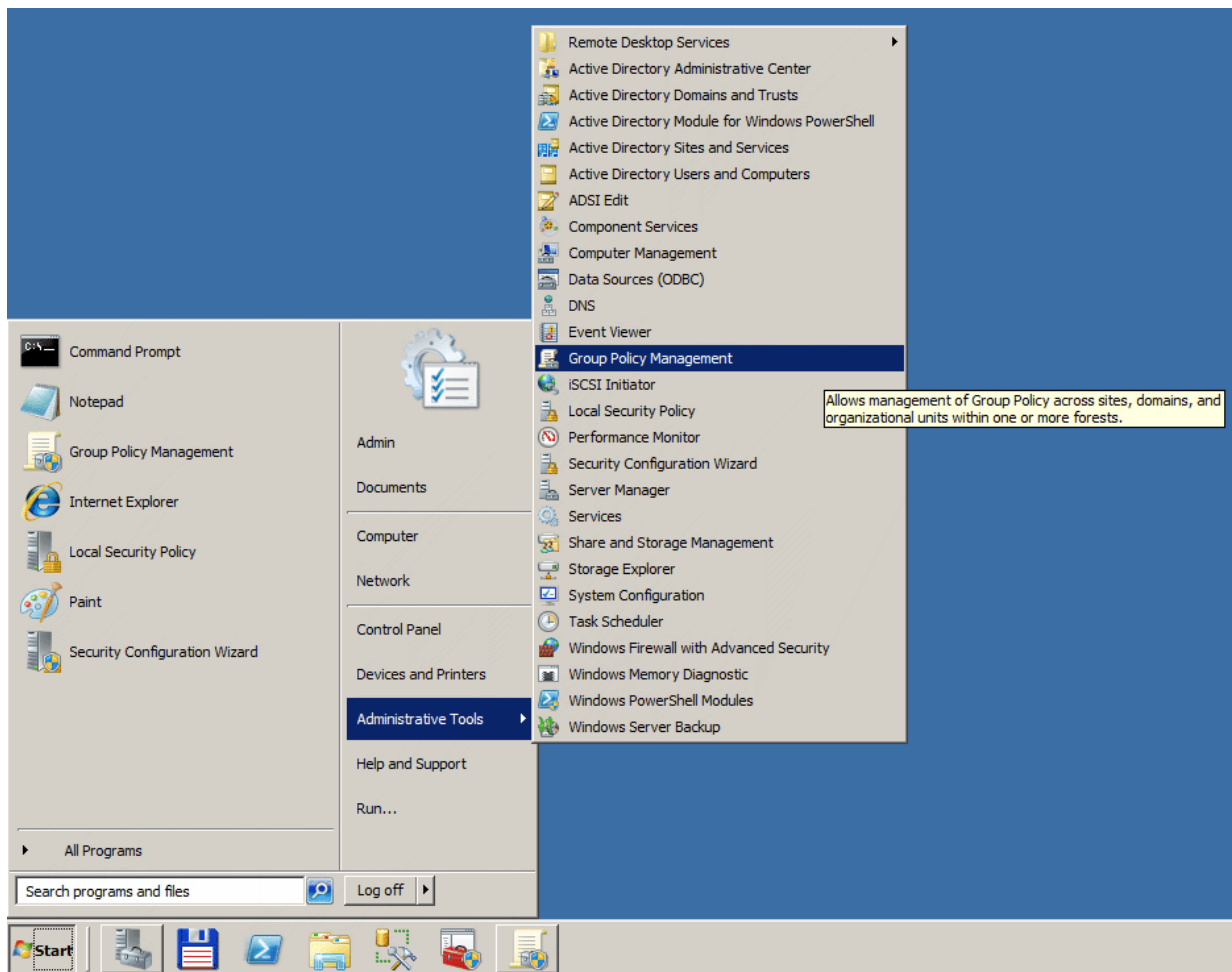
3.2.4.1 Batch Installation of downloader agent using GPO

If you are using Active Directory, you can bulk install the downloader agent using a Group Policy. To use the bulk installation, it is necessary to extract the relevant MSI package of the downloader agent component from the universal package.

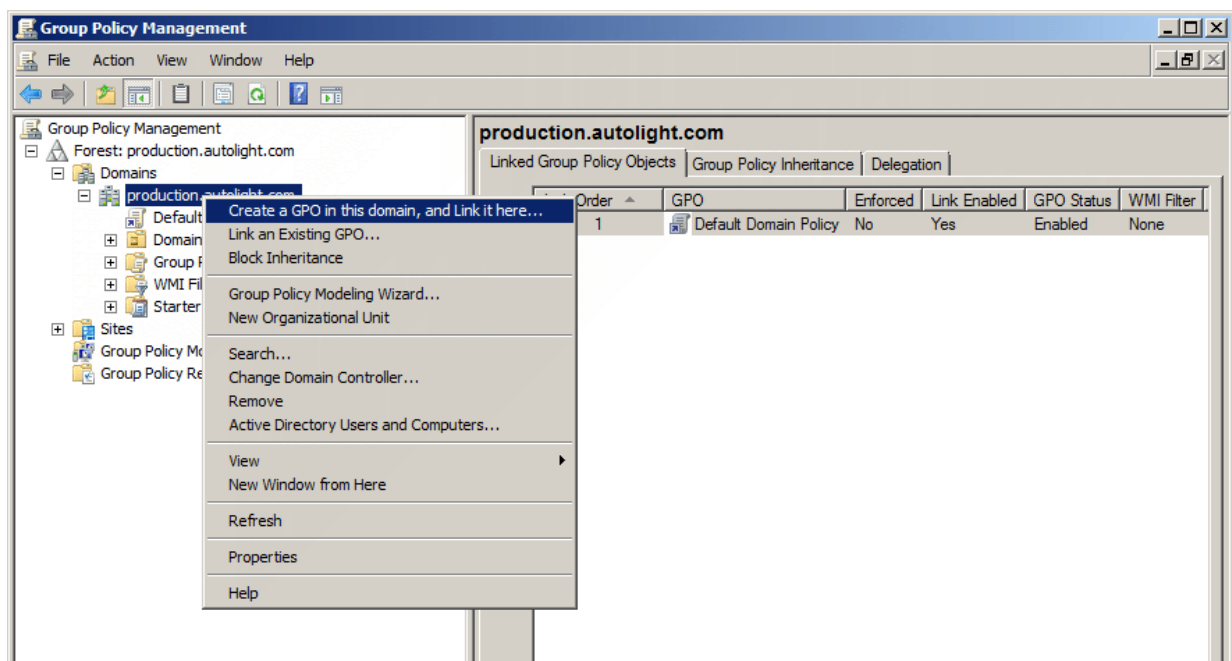
The installation will be described on an example of installation using the Group Policy in Windows Server 2008 R2. Described names and some steps may vary slightly depending on the version of the server system.

- Start the Safetica universal installer.

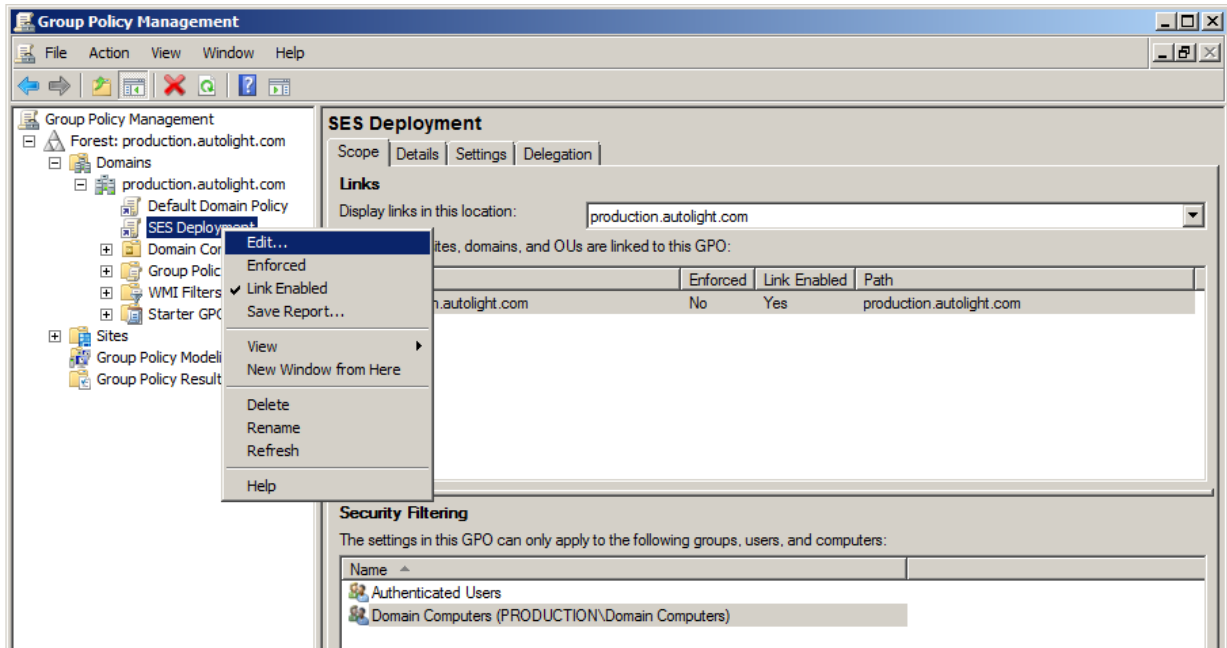
2. Go to *Installation -> Safetica Agent -> Extract installer*. In the installer configuration, enter the server address and port to which the downloader agent will connect. Save the installation package on a shared disk or shared directory in the corporate network and set access rights (read and run will be sufficient) to this folder for the desired group (probably default - *Domain Users* and *Domain Computers*).
3. Go to *Administrative Tools -> Group Policy Management*.



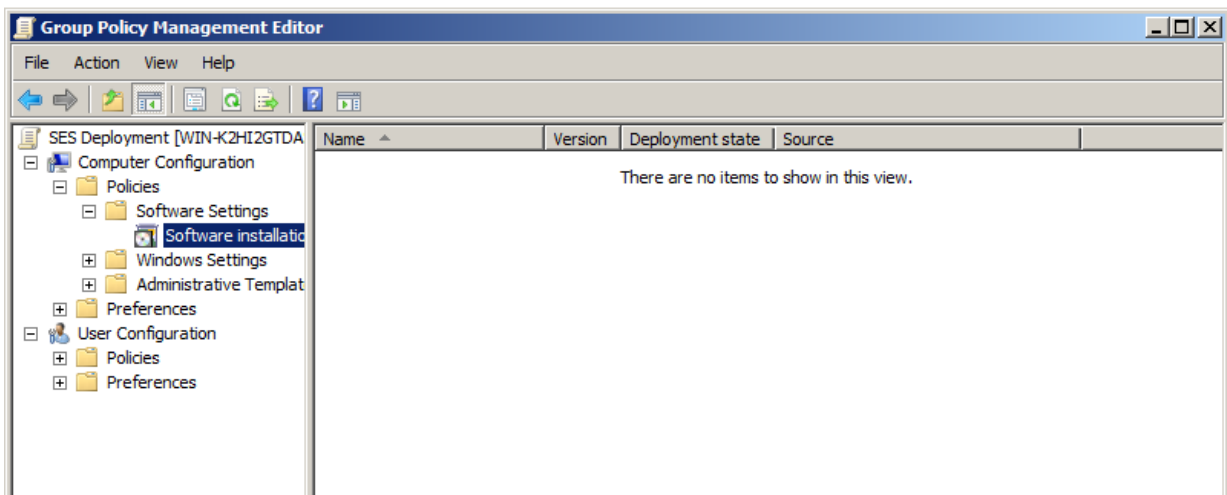
4. Right-click the organizational unit to which you want to deploy the downloader agent and select *Create a GPO in this domain and link it here ...*



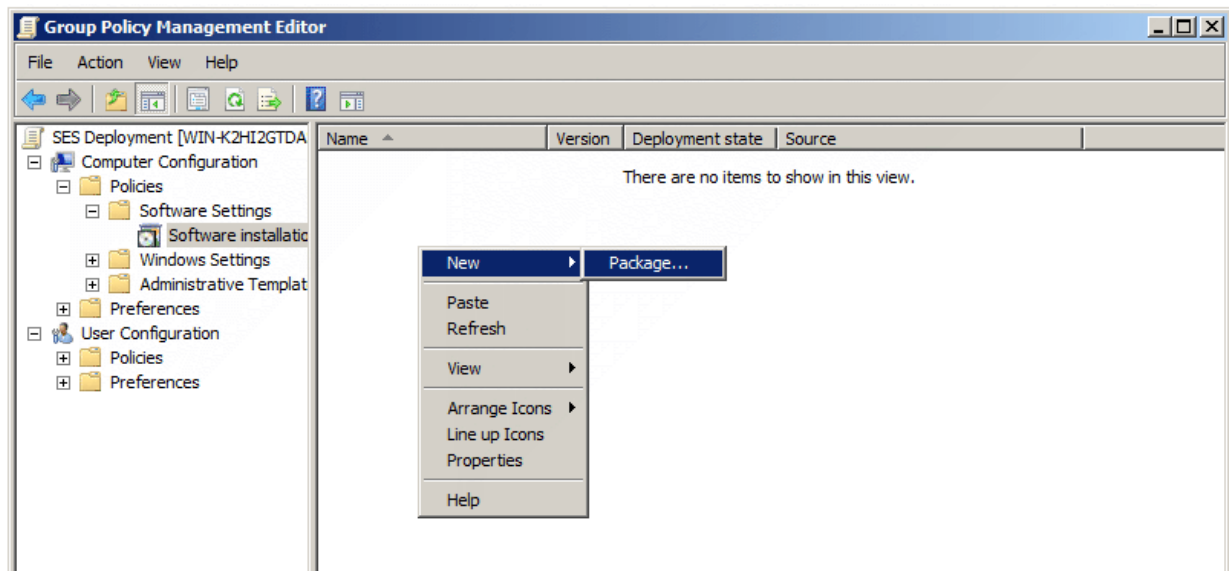
5. Give an arbitrary name to the new object (for example, Safetica Deployment).
6. Select your newly created group policy and right-click to select *Edit*.



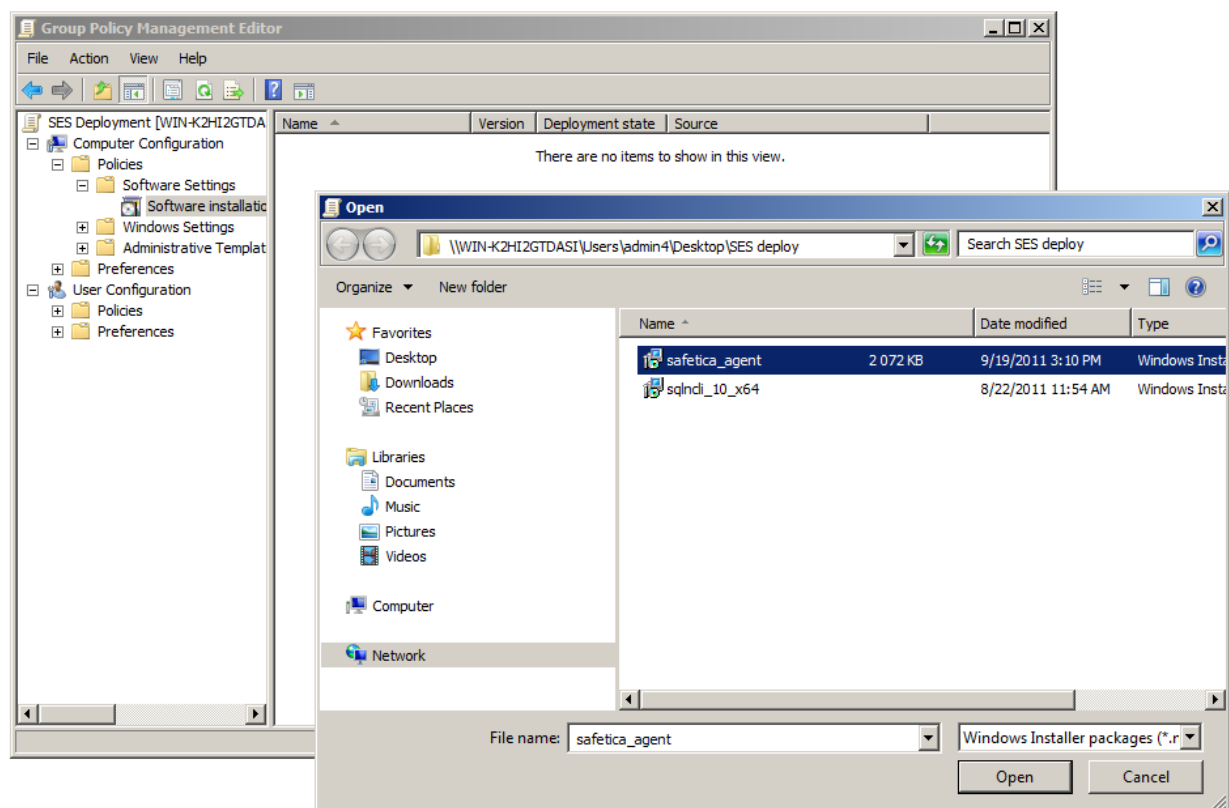
7. In the window that opens, navigate to *Computer Configuration -> Policies -> Software Settings* and click on *Software installation*.



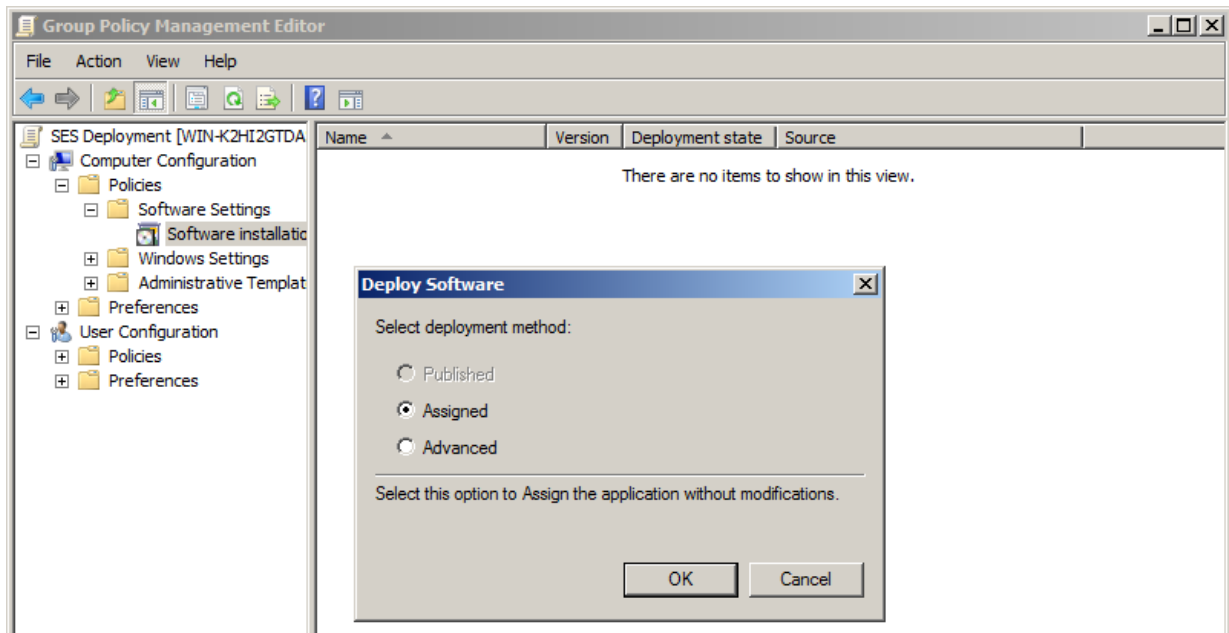
8. Right-click on the window with a list of software and select *New Item -> Package ...*



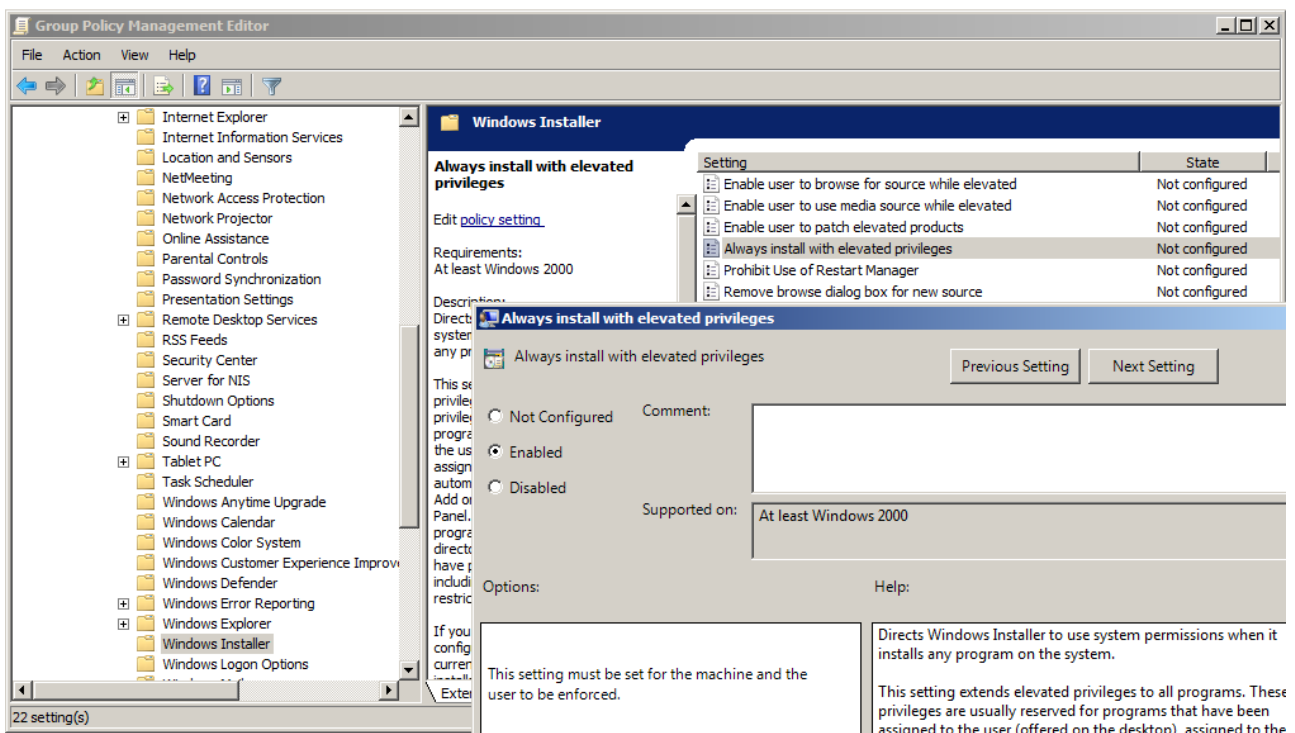
9. In the MSI package selection dialog box, navigate to the shared network folder where you copied the MSI package with the downloader agent, and select it.



10. In the next dialog window, select *Assigned* and confirm.



11. Next, open *Computer Setup -> Management Templates -> Windows Components -> Windows Installer*. There, you should find the item *Always install with elevated privileges* and set it to *Enabled*. This ensures that the downloader agent will be installed on end workstations properly and without problems.



12. After rebooting client computers for which the policy was created, the downloader agent will automatically install. To enforce policy updates, enter the *gpupdate /force* command on a client workstation.
13. Policy configuration is completed and the distribution of the downloader agent is ready now. When the client computers are started, the downloader agent installs.

3.2.4.2 Manual installation of downloader agent

The downloader agent is used to install, update and manage the Safetica client at the end workstations. For manual installation of the downloader agent at the end workstation, proceed as follows:

1. Open the universal installer and select your language. Confirm the license conditions and go to *Installation > Safetica Agent*.
2. Here you have several options:
 - o Launch the installation directly from the universal installer by using the *Run installer button*.
 - o Extract only the downloader agent installer that you can use separately for later installations.

Note: In the third part - Tools and Components you will find components essential for correct client or Microsoft SQL Server installation.

3. In the next step, fill in the following information for proper downloader agent connection to server:


- o *Server address* – server address to which the downloader agent will connect.

Note: You can also enter multiple addresses that can be used by the downloader agent to connect to one server. This is useful in scenarios where the downloader agent is installed on a laptop being used also outside the company premises where it will have a different address for server connection. If you enter more addresses, separate them with the | symbol. Example: 192.168.100.2|158.142.12.10|145.65.87.22.

- o *Port* – the port where server will be listening. The default port is 4438.

Click on *Next*.

4. After the configuration is saved, the downloader agent installer will launch. After clicking on *Next*, the downloader agent will install on the end workstation and then connect to the server.

Successful downloader agent installation can be verified from console, where the user tree will show the  icon with the end workstation name. Client can be remotely installed on the end workstation with the downloader agent installed.

Note: The downloader agent component will be automatically installed along with the client.

3.2.5 Installing client

Safetica client is the last component of the Safetica product that you need to install. It is an essential component. On the client computers, it ensures the enforcement of security policies and ensures that all the functions configured in console run properly. For end users, it can also provide a set of security tools for their own use.

Recommended installation procedure

1. Install the downloader agent [on the endpoint station](#).
2. Safetica client installation should be performed remotely over *Console -> Maintenance -> Endpoint Management*. Follow the instructions in the *Endpoint management* section.

Manual installation using the universal installer

1. Launch the universal installer that you have previously downloaded. After selecting your language and agreeing to the license terms, go to *Installation > Safetica Management Client x86 or x64* – this depends on which operating system version is installed on the endpoint.

2. Here you several options:

- Run the setup directly from the universal installer by clicking on the *Run installer* button.
- Extract only the client installer, which you can then use separately for later installation.

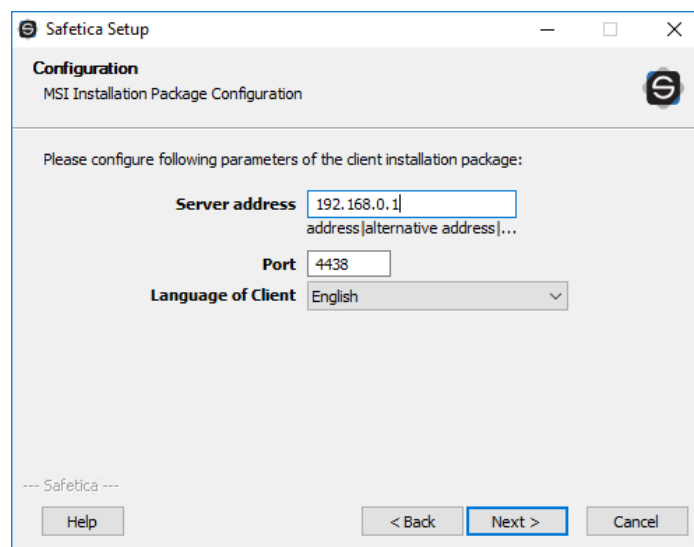
Note: In the third part Tools and Components are components that are necessary for proper function of Safetica Endpoint Client or Microsoft SQL Server 2012 SP2 Express.

3. You will be asked to enter the following information before extraction or running the installer:


- *Server address* – address of server for client to connect to.

Note: You can enter multiple addresses that client can use for connecting to a single server. This is useful in scenarios where client is installed on a laptop that is used also outside company premises, where it will have a different address for server connection. If you enter multiple addresses, separate them with the | symbol. Example: 192.168.100.2|158.142.12.10|145.65.87.22.

- *Port* – port on which the server listens. The default is 4438.
- *Language of client* – language of the client.



4. Select the installation folder.

5. You can verify successful installation from the console where you will find icon  in the user tree with the name of the endpoint station. If you cannot find the endpoint station in the console, verify that the STCService.exe service is running on the endpoint station (Windows Task Manager > Services > STCService – running) and make sure that in your firewall and antivirus you have established exceptions for the following processes: STCService.exe, STPCLock.exe, STMonitor.exe, STUserApp.exe, and Safetica.exe.

